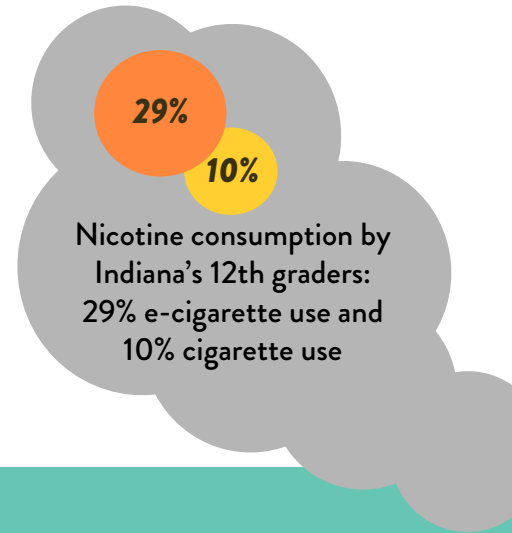
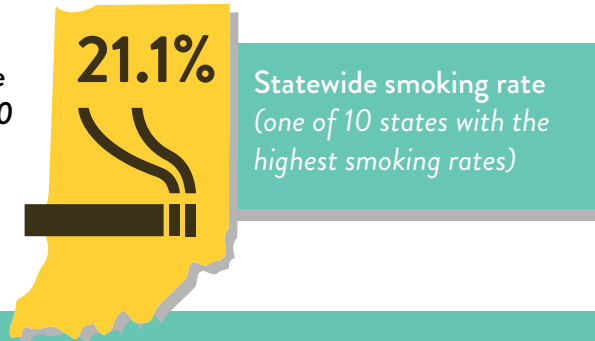


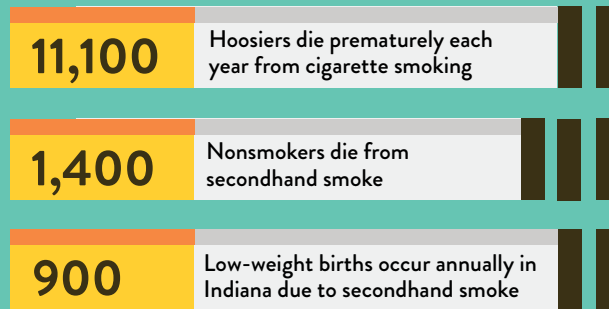
## INDIANA CONTINUES TO LAG BEHIND ON CURBING TOBACCO USE

**21%** Indianapolis smoking rate (tied for last among the 30 largest U.S. cities)



## THE HUMAN TOLL OF SMOKING

Tobacco use is the leading cause of preventable disease and death in the U.S.—and it is taking a heavy toll on Indiana



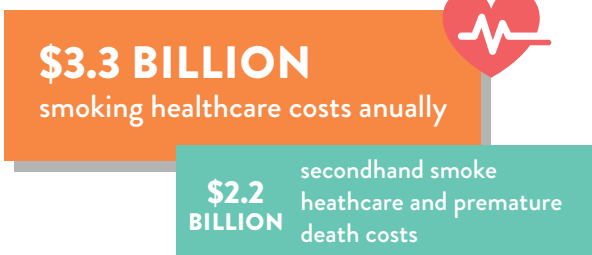
**13.5%** of pregnant women smoke (11th worst state in this category)

## INDIANA TAXPAYERS

## TOBACCO USE COSTS

## BUSINESSES

Smoking drives up healthcare expenses and increases tax burden



Smoking costs Indiana employers **\$2.8 BILLION ANNUALLY**



### Sources

John Tauras, Ph.D., Frank Chaloupka, Ph.D., and Paul Halverson, Dr.PH. Report on the Tobacco Epidemic in Marion County and Indiana and Effective Solutions: 2018 Update. October 2018.

Indiana University Richard M. Fairbanks School of Public Health. Report on the Tobacco Epidemic in Marion County and Indiana. September 2016.